

Printing in Cadence

Open up your cellview.

goto the **Design menu** → **plot** → **submit**

Then click the '**plot options**' button.

You probably want to **click the center plot and fit to page buttons**.

Down near the bottom, check the button near "**send plot only to file**"

and **type in a filename** in the box next to it.. ie. schematic.ps

Uncheck the "mail log to" button

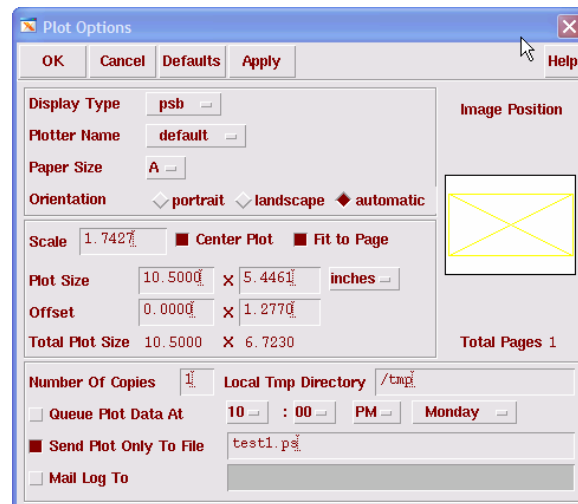
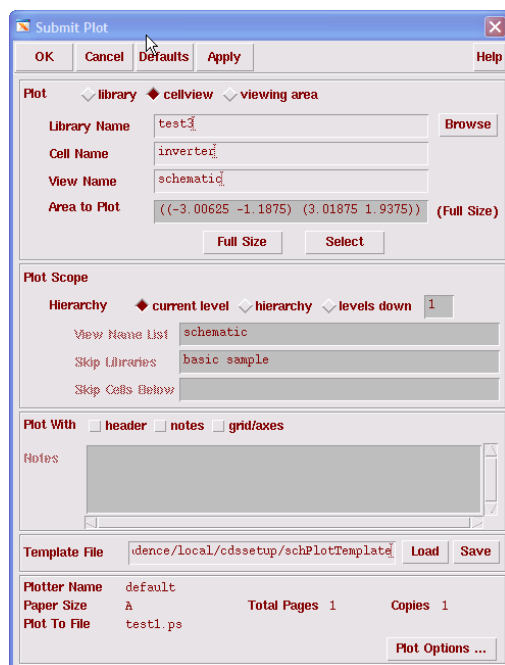
Then click OK and click OK on the submit plot page.

Now you can find the ps file in your working directory.

type **lpr test.ps**

(where test.ps is the file name of your schematic)

It should now print



Printing Using XV

To save your Schematics, Layouts, Symbols, Simulations in from the vlsi lab. Here is option to acquiring screenshots of your work and save it as a gif or jpeg file.

Type **xv &** at the console terminal.

A window will pop up, just right click on it and click on Grab. Change the time, that way it will allow you time to select which window you want to screen shot.

